














Worklist: 1941

<u>LAB CASE</u>	<u>ITEM</u>	<u>TASK ID</u>	<u>DESCRIPTION</u>	
C2017-1965	1	97120	AM 3 Urine Carboxy-THC	
C2017-1966	2	97299	AM 3 Urine Carboxy-THC	
C2017-1971	1	97121	AM 3 Urine Carboxy-THC	
C2017-1998	1	97122	AM 3 Urine Carboxy-THC	
C2017-1999	1	97123	AM 3 Urine Carboxy-THC	
C2017-2073	1	97124	AM 3 Urine Carboxy-THC	
M2017-3871	3	97302	AM 3 Urine Carboxy-THC	
M2017-3946	4	97301	AM 3 Urine Carboxy-THC	
M2017-4368	3	97300	AM 3 Urine Carboxy-THC	
M2017-4388	2	97298	AM 3 Urine Carboxy-THC	
P2017-2351	3	97297	AM 3 Urine Carboxy-THC	
P2017-2352	1	97316	AM 3 Urine Carboxy-THC	
P2017-2397	1	97317	AM 3 Urine Carboxy-THC	



Area Percent Report

Data Path : D:\DATA\2017\10-12-2017 Urine\
 Data File : 03301055.D
 Acq On : 13 Oct 2017 07:24
 Operator :
 Sample : BRC3
 Misc : Bio-RAD Lot 68440:AM# 3 Worklist 1941
 ALS Vial : 33 Sample Multiplier: 1

Integration Parameters: autoint1.e
 Integrator: ChemStation

Method : D:\DATA\2017\91917 AM3 Worklist 1898\02401041.D\cthc 101415.M
 Title :

Signal : EIC Ion 371.00 (370.70 to 371.70): 03301055.D\data.ms

peak #	R.T. min	first scan	max scan	last scan	PK TY	peak height	corr. area	corr. % max.	% of total
1	4.633	77	84	109	VB	49322	805679	100.00%	95.036%
2	4.841	114	123	139	BB	2375	42081	5.22%	4.964%

Sum of corrected areas: 847759

Signal : EIC Ion 473.00 (472.70 to 473.70): 03301055.D\data.ms

peak #	R.T. min	first scan	max scan	last scan	PK TY	peak height	corr. area	corr. % max.	% of total
1	4.635	62	84	104	BB 2	22454	376596	100.00%	85.332%
2	4.843	114	123	134	BB 2	1767	31708	8.42%	7.185%
3	5.096	154	170	172	BB	2967	33025	8.77%	7.483%

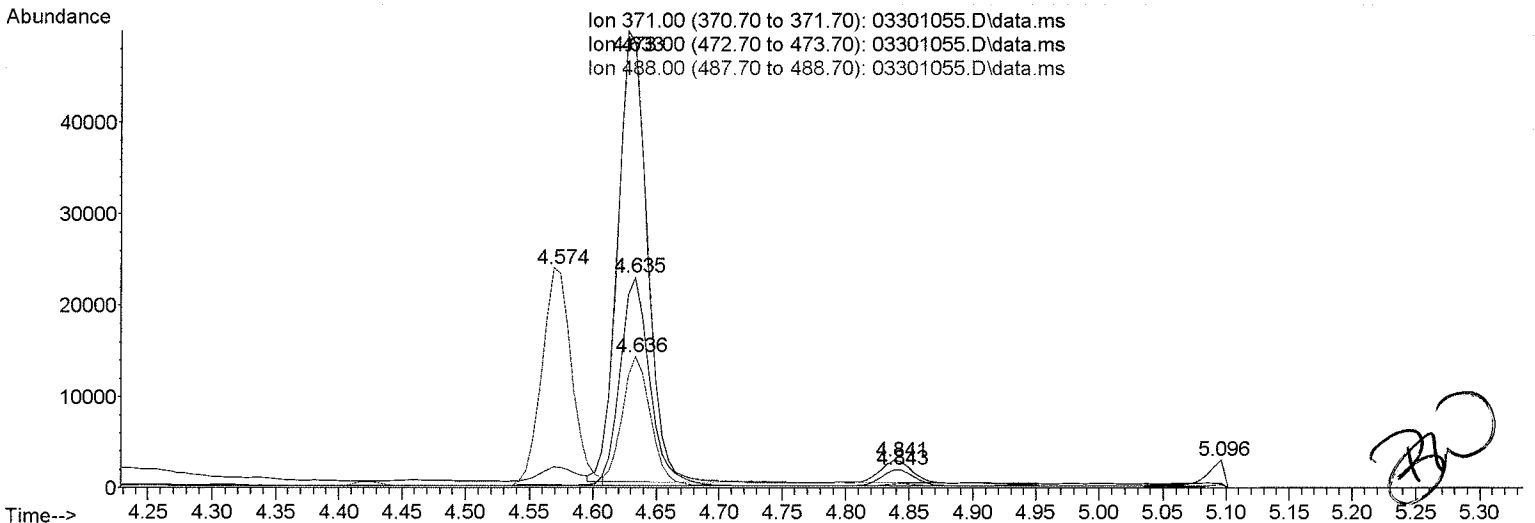
Sum of corrected areas: 441329

Signal : EIC Ion 488.00 (487.70 to 488.70): 03301055.D\data.ms

peak #	R.T. min	first scan	max scan	last scan	PK TY	peak height	corr. area	corr. % max.	% of total
1	4.574	64	73	79	BV	23854	387990	100.00%	63.313%
2	4.636	79	84	101	VB	13811	224820	57.94%	36.687%

Sum of corrected areas: 612810

cthc 101415.M Fri Oct 13 09:47:09 2017



2.4.4 Carboxy-THC QC Calculations

Run Date: **10/12/2017**

Case Calculations:
Lab Case #: **BRC3-68440**

EIC Ion 371 Corr. Area:	805679	473:371 Ratio:	0.467
EIC Ion 473 Corr. Area:	376596	488:371 Ratio:	0.279
EIC Ion 488 Corr. Area:	224820		

Quality Control Calculations:

Retention Time acceptable range: **4.534** to **4.731**

	<i>1st ctrl</i>	<i>2nd ctrl</i>
EIC Ion 371 Corr. Area:	4301657	4861383
EIC Ion 473 Corr. Area:	1957978	2189501
EIC Ion 488 Corr. Area:	1219865	1342751

Approximate minimum corrected area of 371 ion: ~ **860331**

		<i>Ratio of 473:371</i>			
	<i>1st ctrl</i>		<i>2nd ctrl</i>	<i>avg.</i>	
	0.455		0.450	0.453	

Accepted Range (+/- 20%) **0.362 - 0.543**

		<i>Ratio of 488:371</i>			
	<i>1st ctrl</i>		<i>2nd ctrl</i>	<i>avg</i>	
	0.284		0.276	0.280	

Accepted Range (+/- 20%): **0.224 - 0.336**

Carboxy-calculation sheet
Revision 0 effective date 10/23/13
Issuing authority: Quality Manager



Area Percent Report

Data Path : D:\DATA\2017\10-12-2017 Urine\
Data File : 03201054.D
Acq On : 13 Oct 2017 07:15
Operator :
Sample : NCMJ
Misc : negative lot 91917:AM# 3 Worklist 1941
ALS Vial : 32 Sample Multiplier: 1

Integration Parameters: autoint1.e
Integrator: ChemStation

Method : D:\DATA\2017\91917 AM3 Worklist 1898\02401041.D\cthc 101415.M
Title :

Signal : EIC Ion 371.00 (370.70 to 371.70): 03201054.D\data.ms

peak #	R.T. min	first scan	max scan	last scan	PK TY	peak height	corr. area	corr. % max.	% of total
1	4.576	66	73	81	PV	3467	62324	100.00%	100.000%

Sum of corrected areas: 62324

Signal : EIC Ion 473.00 (472.70 to 473.70): 03201054.D\data.ms

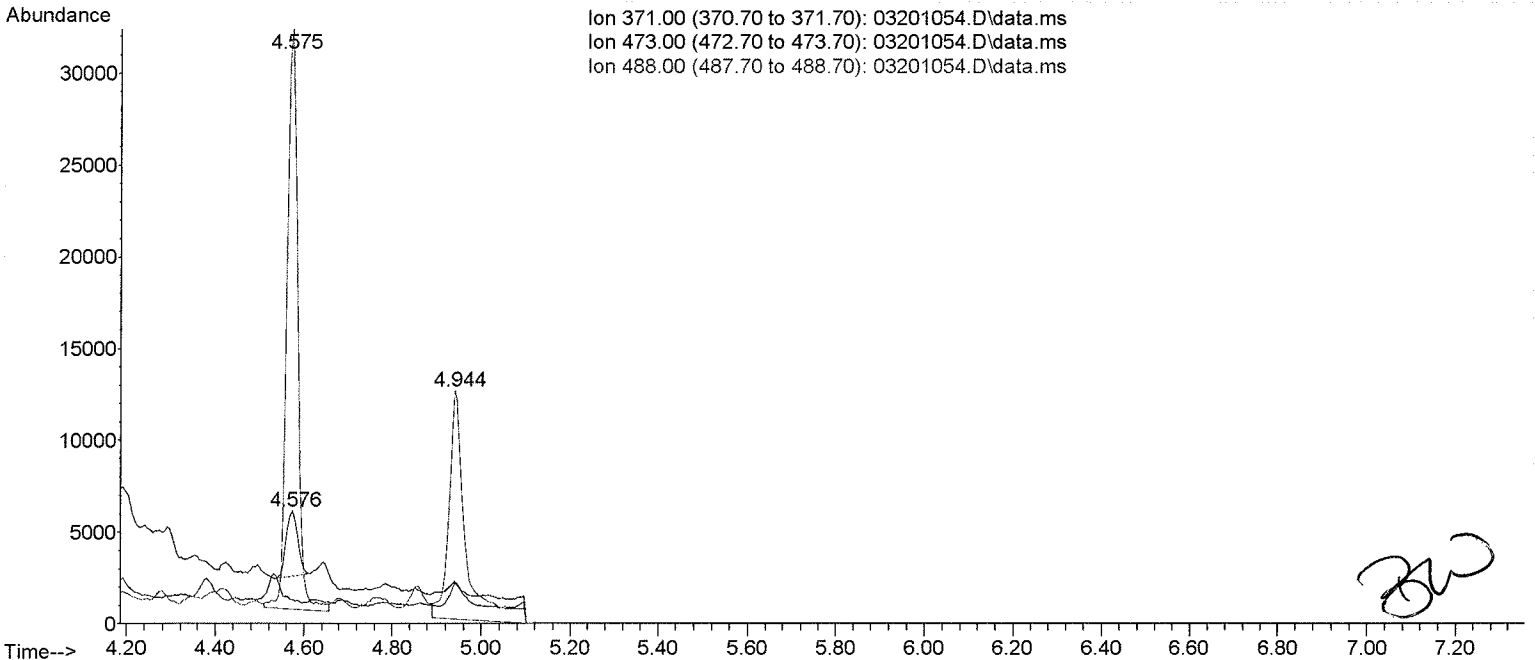
peak #	R.T. min	first scan	max scan	last scan	PK TY	peak height	corr. area	corr. % max.	% of total
--------	----------	------------	----------	-----------	-------	-------------	------------	--------------	------------

No peaks were detected using the method integration parameters!
Signal : EIC Ion 488.00 (487.70 to 488.70): 03201054.D\data.ms

peak #	R.T. min	first scan	max scan	last scan	PK TY	peak height	corr. area	corr. % max.	% of total
1	4.575	61	73	89	VV	31161	528380	100.00%	61.289%
2	4.944	132	142	172	VB	12335	333729	63.16%	38.711%

Sum of corrected areas: 862109

cthc 101415.M Fri Oct 13 09:46:43 2017



Area Percent Report

Data Path : D:\DATA\2017\10-12-2017 Urine\
 Data File : 03101053.D
 Acq On : 13 Oct 2017 07:05
 Operator :
 Sample : PCMJ
 Misc : C-THC lot#FE03121501 in negative lot 91917:AM# 3 Worklist 1941
 ALS Vial : 31 Sample Multiplier: 1

Integration Parameters: autoint1.e
 Integrator: ChemStation

Method : D:\DATA\2017\91917 AM3 Worklist 1898\02401041.D\cthc 101415.M
 Title :

Signal : EIC Ion 371.00 (370.70 to 371.70): 03101053.D\data.ms

peak #	R.T. min	first scan	max scan	last scan	PK TY	peak height	corr. area	corr. % max.	% of total
1	4.574	66	73	77	PV	3181	55211	1.28%	1.267%
2	4.634	77	84	107	VV	257112	4301657	100.00%	98.733%

Sum of corrected areas: 4356868

Signal : EIC Ion 473.00 (472.70 to 473.70): 03101053.D\data.ms

peak #	R.T. min	first scan	max scan	last scan	PK TY	peak height	corr. area	corr. % max.	% of total
1	4.635	76	84	105	PV	116378	1957978	100.00%	100.000%

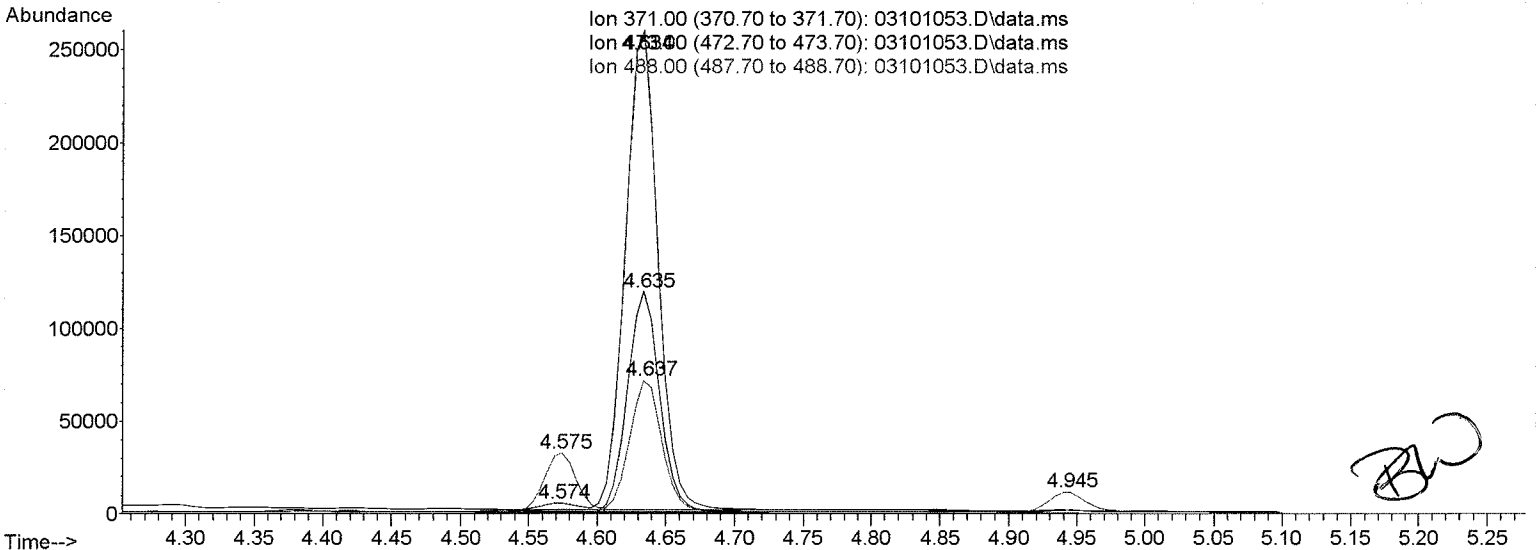
Sum of corrected areas: 1957978

Signal : EIC Ion 488.00 (487.70 to 488.70): 03101053.D\data.ms

peak #	R.T. min	first scan	max scan	last scan	PK TY	peak height	corr. area	corr. % max.	% of total
1	4.575	61	73	79	VV	31622	535229	43.88%	25.874%
2	4.637	79	85	101	VV	70595	1219865	100.00%	58.971%
3	4.945	132	142	172	VB	11467	313477	25.70%	15.154%

Sum of corrected areas: 2068571

cthc 101415.M Fri Oct 13 09:46:24 2017



Area Percent Report

Data Path : D:\DATA\2017\10-12-2017 Urine\
 Data File : 03101084.D
 Acq On : 13 Oct 2017 11:54
 Operator :
 Sample : PCMJ
 Misc : C-THC lot#FE03121501 in negative lot 91917:AM# 3 Worklist 1941
 ALS Vial : 31 Sample Multiplier: 1

Integration Parameters: autoint1.e
 Integrator: ChemStation

Method : D:\DATA\2017\91917 AM3 Worklist 1898\02401041.D\cthc 101415.M
 Title :

Signal : EIC Ion 371.00 (370.70 to 371.70): 03101084.D\data.ms

peak #	R.T. min	first scan	max scan	last scan	PK TY	peak height	corr. area	corr. % max.	% of total
1	4.572	65	73	76	PV	3584	61157	1.26%	1.242%
2	4.631	76	84	107	VV	287826	4861383	100.00%	98.758%

Sum of corrected areas: 4922540

Signal : EIC Ion 473.00 (472.70 to 473.70): 03101084.D\data.ms

peak #	R.T. min	first scan	max scan	last scan	PK TY	peak height	corr. area	corr. % max.	% of total
1	4.633	76	84	104	PV	129517	2189501	100.00%	100.000%

Sum of corrected areas: 2189501

Signal : EIC Ion 488.00 (487.70 to 488.70): 03101084.D\data.ms

peak #	R.T. min	first scan	max scan	last scan	PK TY	peak height	corr. area	corr. % max.	% of total
1	4.573	61	73	78	BV	34504	560845	41.77%	26.158%
2	4.635	78	84	101	VV	79066	1342751	100.00%	62.627%
3	4.942	132	141	165	VV	11057	240435	17.91%	11.214%

Sum of corrected areas: 2144031

cthc 101415.M Fri Oct 13 12:02:37 2017

